



Jeans bottom hemming machine



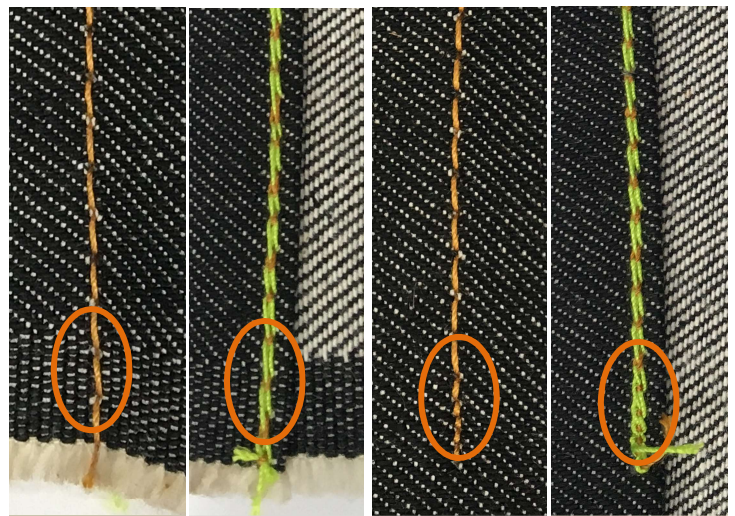
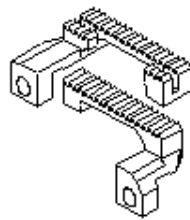
# NC1001GJ-CD-UTAB

1 needle, 195mm small cylinder bed, double chain stitch machine with pneumatic thread trimmer, air blower, condensed stitch device, side roller and pneumatic folder



Exclusive puller feeding with differential feed dog mechanism

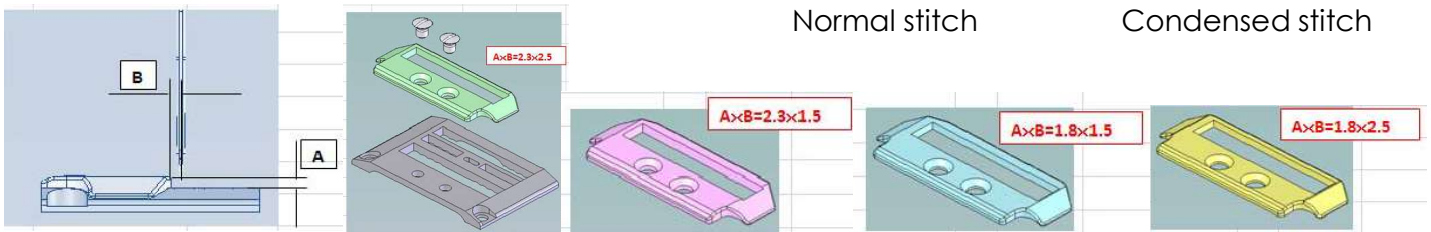
Condensed stitch device is standard equipped



Normal stitch

Condensed stitch

Various types of gauges are available



Model Name	Application	Material	Needle	No. of threads	Feed dog pitch	Needle bar stroke	Stitch length	Diff.Feed ratio	Presser foot lift	Maximum Speed
NC1001GJF-CD-UTAB	Bottom hemming	Denim	TVx5 (#14-22)	2	1.6mm	34mm	6-111 (2.3-4.2mm)	0.8 - 1.2 for left- right feed dog	10	3,000

Headquarters & Factory  
MORIMOTO MFG. CO., LTD.  
Osaka, Japan  
hqeigyo@kansai-special.com



www.kansai-special.com/www.kansai-special.de

Central European Branch  
KANSAI SPECIAL EUROPE GmbH  
Düsseldorf, Germany  
sales@kansai-special.de